

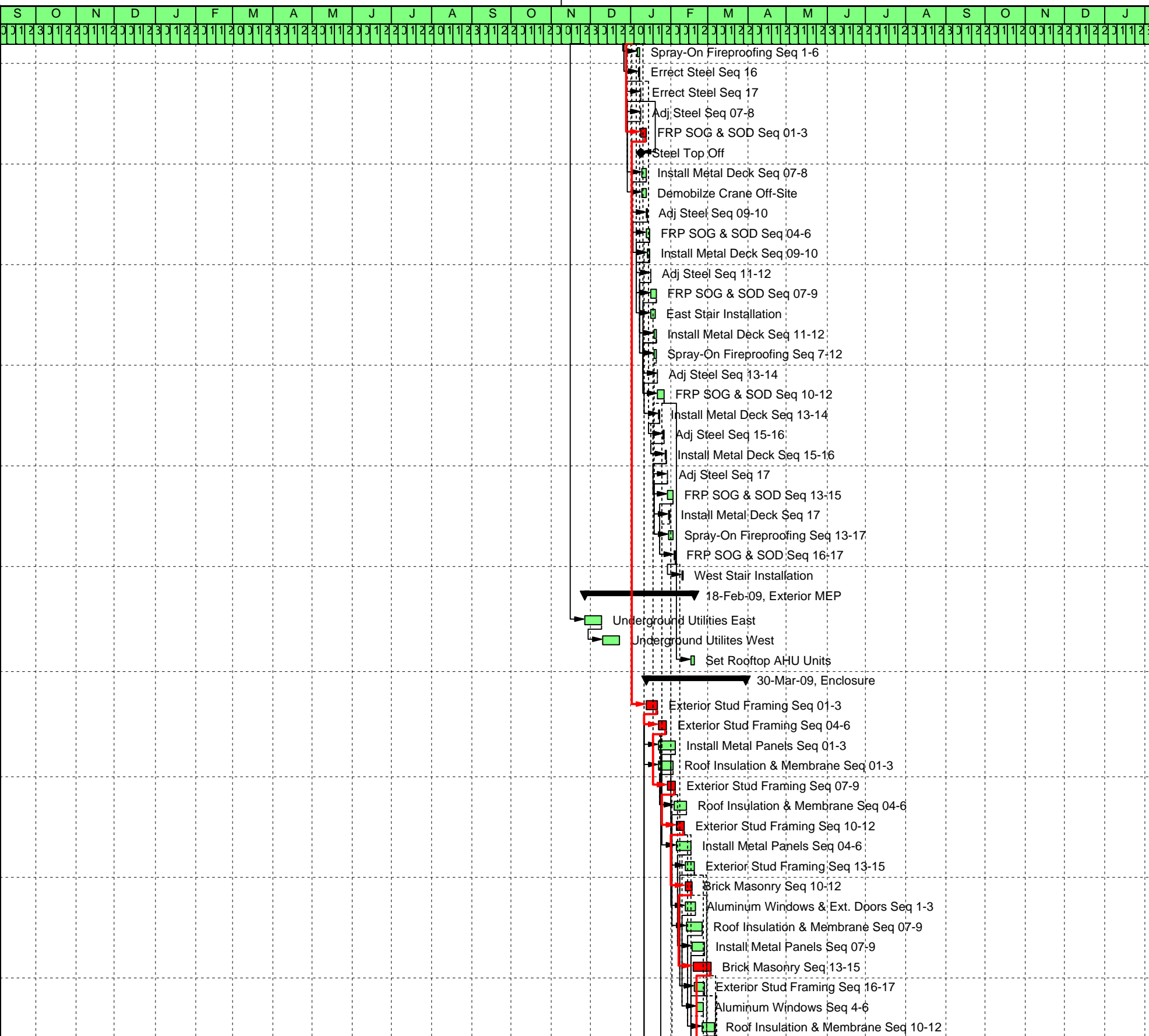
## *Appendix H: IrisWall Project Schedule*

---

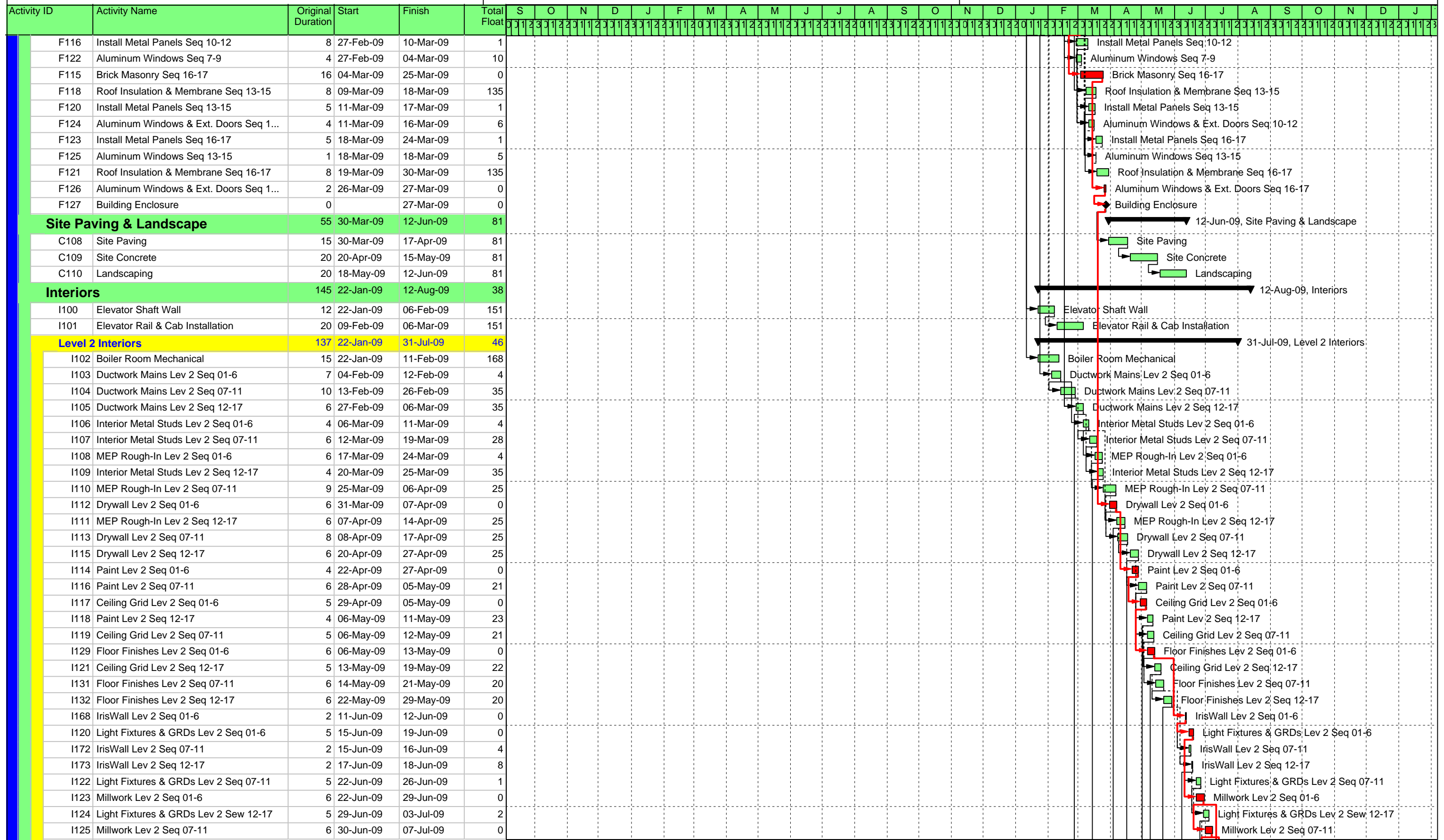
Activity ID	Activity Name	Original Duration	Start	Finish	Total Float	S	O	N	D	J	F	M	A	M	J	J	A	S	O	N	D	J	F	M	A	M	J	J	A	S	O	N	D	J		
<b>Detroit Integrated Transportation ...</b>		546	03-Sep-07	05-Oct-09	0	05-Oct-09, Detroit Integrate																														
A100	Project Start	0	03-Sep-07	05-Jun-09	0	Project Start																														
<b>Design &amp; Precon</b>		460	03-Sep-07	05-Jun-09	86	05-Jun-09, Design & Precon																														
A101	Approvals/Permits	205	03-Sep-07	13-Jun-08	0	Approvals/Permits																														
A102	Schematic Design	60	03-Sep-07	23-Nov-07	22	Schematic Design																														
A103	Design Development	80	26-Nov-07	14-Mar-08	22	Design Development																														
A104	Construction Documents	100	17-Mar-08	01-Aug-08	22	Construction Documents																														
A105	Site Demo and Grading Bid	5	21-Jul-08	25-Jul-08	0	Site Demo and Grading Bid																														
A106	GC Bid / Selection	10	04-Aug-08	15-Aug-08	22	GC Bid / Selection																														
A107	Subcontractor Procurement	10	18-Aug-08	29-Aug-08	22	Subcontractor Procurement																														
A108	GC and Sub Materials Procurement	200	01-Sep-08	05-Jun-09	86	GC and Sub Materials Procurement																														
<b>Sitework</b>		102	28-Jul-08	16-Dec-08	209	16-Dec-08, Sitework																														
C100	Site Demo and Grading Mobilization	5	28-Jul-08	01-Aug-08	0	Site Demo and Grading Mobilization																														
C101	Site Demo	20	04-Aug-08	29-Aug-08	0	Site Demo																														
C102	Site Grading	22	01-Sep-08	30-Sep-08	0	Site Grading																														
C103	Site Mobilization	5	01-Oct-08	07-Oct-08	0	Site Mobilization																														
C104	Site Utility Excavation	35	08-Oct-08	25-Nov-08	204	Site Utility Excavation																														
C105	East Foundation Excavation	25	08-Oct-08	11-Nov-08	0	East Foundation Excavation																														
C106	West Foundation Excavation	25	12-Nov-08	16-Dec-08	19	West Foundation Excavation																														
C107	Install Permanent Site Fence	15	26-Nov-08	16-Dec-08	209	Install Permanent Site Fence																														
<b>Structure</b>		56	25-Nov-08	10-Feb-09	169	10-Feb-09, Structure																														
S100	FRP Foundation Seq 01-3	5	25-Nov-08	01-Dec-08	0	FRP Foundation Seq 01-3																														
S103	Mobilize Crane On-Site	2	27-Nov-08*	28-Nov-08	12	Mobilize Crane On-Site																														
S101	FRP Foundation Seq 04-6	5	02-Dec-08	08-Dec-08	15	FRP Foundation Seq 04-6																														
S102	FRP Foundation Seq 07-9	5	09-Dec-08	15-Dec-08	20	FRP Foundation Seq 07-9																														
S104	FRP Foundation Seq 10-12	5	17-Dec-08	23-Dec-08	19	FRP Foundation Seq 10-12																														
S105	Errect Steel Seq 01	1	17-Dec-08	17-Dec-08	0	Errect Steel Seq 01																														
S106	Errect Steel Seq 02	1	18-Dec-08	18-Dec-08	0	Errect Steel Seq 02																														
S107	Errect Steel Seq 03	1	19-Dec-08	19-Dec-08	6	Errect Steel Seq 03																														
S108	Adj Steel Seq 01-2	1	19-Dec-08	19-Dec-08	0	Adj Steel Seq 01-2																														
S109	Errect Steel Seq 04	1	22-Dec-08	22-Dec-08	6	Errect Steel Seq 04																														
S111	Errect Steel Seq 05	1	23-Dec-08	23-Dec-08	13	Errect Steel Seq 05																														
S112	FRP Foundation Seq 13-15	5	24-Dec-08	30-Dec-08	33	FRP Foundation Seq 13-15																														
S113	Errect Steel Seq 06	1	24-Dec-08	24-Dec-08	13	Errect Steel Seq 06																														
S115	Errect Steel Seq 07	1	25-Dec-08	25-Dec-08	14	Errect Steel Seq 07																														
S117	Errect Steel Seq 08	1	26-Dec-08	26-Dec-08	14	Errect Steel Seq 08																														
S118	Errect Steel Seq 09	1	29-Dec-08	29-Dec-08	15	Errect Steel Seq 09																														
S110	Install Metal Deck Seq 01-2	2	29-Dec-08	30-Dec-08	0	Install Metal Deck Seq 01-2																														
S120	Errect Steel Seq 10	1	30-Dec-08	30-Dec-08	15	Errect Steel Seq 10																														
S122	FRP Foundation Seq 16-17	5	31-Dec-08	06-Jan-09	33	FRP Foundation Seq 16-17																														
S123	Errect Steel Seq 11	1	31-Dec-08	31-Dec-08	17	Errect Steel Seq 11																														
S114	Adj Steel Seq 03-4	1	31-Dec-08	31-Dec-08	0	Adj Steel Seq 03-4																														
S124	Errect Steel Seq 12	1	01-Jan-09	01-Jan-09	17	Errect Steel Seq 12																														
S116	Install Metal Deck Seq 03-4	2	01-Jan-09	02-Jan-09	0	Install Metal Deck Seq 03-4																														
S126	Errect Steel Seq 13	1	02-Jan-09	02-Jan-09	32	Errect Steel Seq 13																														
S128	Errect Steel Seq 14	1	05-Jan-09	05-Jan-09	32	Errect Steel Seq 14																														
S119	Adj Steel Seq 05-6	1	05-Jan-09	05-Jan-09	6	Adj Steel Seq 05-6																														
S129	Errect Steel Seq 15	1	06-Jan-09	06-Jan-09	33	Errect Steel Seq 15																														
S121	Install Metal Deck Seq 05-6	2	06-Jan-09	07-Jan-09	6	Install Metal Deck Seq 05-6																														

█ Actual Work   
 █ Critical Remaining Work   
 ▶ Summary  
█ Remaining Work   
 ◆ Milestone

Activity ID	Activity Name	Original Duration	Start	Finish	Total Float
S150	Spray-On Fireproofing Seq 1-6	2	06-Jan-09	07-Jan-09	189
S131	Errect Steel Seq 16	1	07-Jan-09	07-Jan-09	33
S133	Errect Steel Seq 17	1	08-Jan-09	08-Jan-09	190
S125	Adj Steel Seq 07-8	1	08-Jan-09	08-Jan-09	6
S141	FRP SOG & SOD Seq 01-3	3	08-Jan-09	12-Jan-09	0
S134	Steel Top Off	0		08-Jan-09	192
S127	Install Metal Deck Seq 07-8	2	09-Jan-09	12-Jan-09	6
S136	Demobilze Crane Off-Site	2	09-Jan-09	12-Jan-09	190
S130	Adj Steel Seq 09-10	1	13-Jan-09	13-Jan-09	6
S144	FRP SOG & SOD Seq 04-6	3	13-Jan-09	15-Jan-09	4
S132	Install Metal Deck Seq 09-10	2	14-Jan-09	15-Jan-09	6
S135	Adj Steel Seq 11-12	1	16-Jan-09	16-Jan-09	7
S146	FRP SOG & SOD Seq 07-9	3	16-Jan-09	20-Jan-09	6
S147	East Stair Installation	2	16-Jan-09	19-Jan-09	185
S137	Install Metal Deck Seq 11-12	2	19-Jan-09	20-Jan-09	7
S152	Spray-On Fireproofing Seq 7-12	2	19-Jan-09	20-Jan-09	182
S138	Adj Steel Seq 13-14	1	21-Jan-09	21-Jan-09	21
S148	FRP SOG & SOD Seq 10-12	4	21-Jan-09	26-Jan-09	7
S139	Install Metal Deck Seq 13-14	2	22-Jan-09	23-Jan-09	21
S140	Adj Steel Seq 15-16	1	26-Jan-09	26-Jan-09	21
S142	Install Metal Deck Seq 15-16	2	27-Jan-09	28-Jan-09	21
S143	Adj Steel Seq 17	1	29-Jan-09	29-Jan-09	25
S149	FRP SOG & SOD Seq 13-15	3	29-Jan-09	02-Feb-09	21
S145	Install Metal Deck Seq 17	1	30-Jan-09	30-Jan-09	25
S153	Spray-On Fireproofing Seq 13-17	2	30-Jan-09	02-Feb-09	175
S151	FRP SOG & SOD Seq 16-17	2	03-Feb-09	04-Feb-09	24
S154	West Stair Installation	2	09-Feb-09	10-Feb-09	169
<b>Exterior MEP</b>		<b>61</b>	<b>26-Nov-08</b>	<b>18-Feb-09</b>	<b>163</b>
M100	Underground Utilities East	10	26-Nov-08	09-Dec-08	204
M101	Underground Utilites West	10	10-Dec-08	23-Dec-08	204
M102	Set Rooftop AHU Units	3	16-Feb-09	18-Feb-09	163
<b>Enclosure</b>		<b>55</b>	<b>13-Jan-09</b>	<b>30-Mar-09</b>	<b>135</b>
F100	Exterior Stud Framing Seq 01-3	7	13-Jan-09	21-Jan-09	0
F101	Exterior Stud Framing Seq 04-6	5	22-Jan-09	28-Jan-09	0
F104	Install Metal Panels Seq 01-3	10	22-Jan-09	04-Feb-09	1
F102	Roof Insulation & Membrane Seq 01-3	8	22-Jan-09	02-Feb-09	135
F103	Exterior Stud Framing Seq 07-9	5	29-Jan-09	04-Feb-09	0
F105	Roof Insulation & Membrane Seq 04-6	8	03-Feb-09	12-Feb-09	135
F106	Exterior Stud Framing Seq 10-12	5	05-Feb-09	11-Feb-09	0
F108	Install Metal Panels Seq 04-6	8	05-Feb-09	16-Feb-09	1
F107	Exterior Stud Framing Seq 13-15	5	12-Feb-09	18-Feb-09	14
F109	Brick Masonry Seq 10-12	4	12-Feb-09	17-Feb-09	0
F117	Aluminum Windows & Ext. Doors Seq 1-3	6	12-Feb-09	19-Feb-09	11
F110	Roof Insulation & Membrane Seq 07-9	8	13-Feb-09	24-Feb-09	135
F113	Install Metal Panels Seq 07-9	8	17-Feb-09	26-Feb-09	1
F111	Brick Masonry Seq 13-15	10	18-Feb-09	03-Mar-09	0
F112	Exterior Stud Framing Seq 16-17	6	19-Feb-09	26-Feb-09	14
F119	Aluminum Windows Seq 4-6	4	20-Feb-09	25-Feb-09	11
F114	Roof Insulation & Membrane Seq 10-12	8	25-Feb-09	06-Mar-09	135



■ Actual Work    
 ■ Critical Remaining Work    
 ■ Remaining Work    
 ◆ Milestone    
 ⇨ Summary



■ Actual Work     ■ Critical Remaining Work     ▶ Summary  
■ Remaining Work     ◆ Milestone

Activity ID	Activity Name	Original Duration	Start	Finish	Total Float	Calendar Grid																											
						S	O	N	D	J	F	M	A	M	J	J	A	S	O	N	D	J	F	M	A	M	J	J	A	S	O	N	D
I126	Millwork Lev 2 Seq 12-17	6	08-Jul-09	15-Jul-09	0																												
I127	Hang Doors Lev 2 Seq 01-6	2	22-Jul-09	23-Jul-09	0																												
I128	Hang Doors Lev 2 Seq 07-11	4	24-Jul-09	29-Jul-09	0																												
I130	Hang Doors Lev 2 Seq 12-17	2	30-Jul-09	31-Jul-09	0																												
<b>Level 1 Interiors</b>		<b>113</b>	<b>09-Mar-09</b>	<b>12-Aug-09</b>	<b>38</b>	Summary arrow pointing to 12-Aug-09, Level 1 Interiors																											
I133	Ductwork Mains Lev 1 Seq 01-6	7	09-Mar-09	17-Mar-09	35																												
I134	Ductwork Mains Lev 1 Seq 07-11	10	18-Mar-09	31-Mar-09	35																												
I135	Inerior Metal Studs Lev 1 Seq 01-6	4	26-Mar-09	31-Mar-09	35																												
I136	Ductwork Mains Lev 1 Seq 12-17	6	01-Apr-09	08-Apr-09	44																												
I137	Inerior Metal Studs Lev 1 Seq 07-11	6	01-Apr-09	08-Apr-09	35																												
I139	Inerior Metal Studs Lev 1 Seq 12-17	4	09-Apr-09	14-Apr-09	44																												
I138	MEP Rough-In Lev 1 Seq 01-6	6	15-Apr-09	22-Apr-09	25																												
I140	MEP Rough-In Lev 1 Seq 07-11	9	23-Apr-09	05-May-09	25																												
I143	Drywall Lev 1 Seq 01-6	6	28-Apr-09	05-May-09	25																												
I141	MEP Rough-In Lev 1 Seq 12-17	6	06-May-09	13-May-09	29																												
I144	Drywall Lev 1 Seq 07-11	8	06-May-09	15-May-09	25																												
I145	Paint Lev 1 Seq 01-6	4	12-May-09	15-May-09	25																												
I142	Permanent HVAC System	0		13-May-09	103																												
I146	Drywall Lev 1 Seq 12-17	6	18-May-09	25-May-09	27																												
I147	Paint Lev 1 Seq 07-11	6	18-May-09	25-May-09	25																												
I148	Ceiling Grid Lev 1 Seq 01-6	5	20-May-09	26-May-09	23																												
I149	Paint Lev 1 Seq 12-17	4	26-May-09	29-May-09	27																												
I150	Ceiling Grid Lev 1 Seq 07-11	5	27-May-09	02-Jun-09	24																												
I161	Floor Finishes Lev 1 Seq 01-6	6	01-Jun-09	08-Jun-09	20																												
I152	Ceiling Grid Lev 1 Seq 12-17	5	03-Jun-09	09-Jun-09	25																												
I162	Floor Finishes Lev 1 Seq 07-11	6	09-Jun-09	16-Jun-09	20																												
I163	Floor Finishes Lev 1 Seq 12-17	6	17-Jun-09	24-Jun-09	20																												
I165	IrisWall Lev 1 Seq 01-6	2	19-Jun-09	22-Jun-09	12																												
I170	IrisWall Lev 1 Seq 07-11	2	23-Jun-09	24-Jun-09	16																												
I175	IrisWall Lev 1 Seq 12-17	2	25-Jun-09	26-Jun-09	20																												
I151	Light Fixtures & GRDs Lev 1 Seq 01-6	5	06-Jul-09	10-Jul-09	3																												
I153	Light Fixtures & GRDs Lev 1 Seq 07-11	5	13-Jul-09	17-Jul-09	4																												
I154	Millwork Lev 1 Seq 01-6	6	16-Jul-09	23-Jul-09	0																												
I155	Light Fixtures & GRDs Lev 1 Seq 12-17	5	20-Jul-09	24-Jul-09	5																												
I156	Millwork Lev 1 Seq 07-11	6	24-Jul-09	31-Jul-09	0																												
I158	Millwork Lev 1 Seq 12-17	6	03-Aug-09	10-Aug-09	0																												
I157	Hang Doors Lev 1 Seq 01-6	2	03-Aug-09	04-Aug-09	0																												
I159	Hang Doors Lev 1 Seq 07-11	4	05-Aug-09	10-Aug-09	0																												
I160	Hang Doors Lev 1 Seq 12-17	2	11-Aug-09	12-Aug-09	0																												
<b>Completion &amp; Closeout</b>		<b>51</b>	<b>27-Jul-09</b>	<b>05-Oct-09</b>	<b>0</b>	Summary arrow pointing to 05-Oct-09, Completion & Closeout																											
A109	Testing & Air Balancing	15	27-Jul-09	14-Aug-09	36																												
A110	Substantial Completion	0		12-Aug-09	0																												
A111	Punchlist	28	13-Aug-09	21-Sep-09	0																												
A112	Owner Move-In	10	22-Sep-09	05-Oct-09	0																												

■ Actual Work    ■ Critical Remaining Work    ▶ Summary  
 Remaining Work    ◆ Milestone